



Cardbase V1.0 (Chipdrive reader)

[Visualbasic source](#)

[Executables](#)

[Admin \(manage cards\)](#)

[Client \(runs in the systemtray\)](#)

[Information about the project](#)

[Thanks](#)

[Download Files](#)

Admin: [Goto top](#)

The screenshot shows the 'Cardbase V1.0 - Admin' application window. It has a title bar with a close button. The window is divided into several sections:


- Worklogg:** A text area containing the message '24.05.2004 18:07:25 : Program is ready to read card'.
- Pincode (STEP 1):** Contains input fields for 'Transportcode (6)' (value: FFFFFFF) and 'New pin (0)'. There are buttons for 'default 4', 'default 6', 'generate 4 pin', and 'gen 6 pin', each with a help icon.
- User information (STEP 2):** Contains input fields for 'Name', 'Adress', and 'Email'. A 'Chose a picture' button is located below the fields.
- Picbasic.org (STEP 3):** Contains a note: 'NB: This works only if you use internet explorer (webbrowser). You must be connected to internet.' Below this are 'Username:' and 'Password:' input fields, a 'Check login' button, and a help icon.
- Map card to database (STEP 4):** Contains a note: 'When you have finished inserting userinformation then press map button and the user will be mapped to this card.' Below this are 'Map to database /write card' and 'Manage database' buttons.
- Status:** A bar at the bottom of the window displaying 'Status : Insert card please!'.

Enter userinformation into database and program card: [Goto top](#)

Cardbase V1.0 - Admin

Worklogg
 24.05.2004 18:15:28 : Transportcode ok,ready to program
 24.05.2004 18:15:29 : PIN Changed
 24.05.2004 18:15:30 : Card programmed Ok
 24.05.2004 18:15:30 : Card is mapped to database, please take out the

Pincode (STEP 1)
 Transportcode (4)
 New pin (4)

User information (STEP 2)

 Name
 Adress
 Email

Picbasic.org (STEP 3)
 User ok!
 NB:This works only if you use internet explorer (webbrowser).
 You must be connected to internet.
 Username :
 Password :

Map card to database (STEP 4)
 When you have finished inserting userinformation then press map button and the user will be mapped to this card.

Status : Card ok

Manage cards in database : [Goto top](#)

Cardbase V1.0 - Admin

Worklogg
 24.05.2004 18:16:52 : A cardbase card is identified. Cardowner : Testy OK!

Records stored in the database
 (1) - Testy Serial:kFMuW3gpCr2oUblWeTqtD1konQI7I63hDYM5M092kixZgg869IQxwYk2Qg7noq0PR

Serial number :

Status : Card identified, Cardowner : Testy

Client : [Goto top](#)

Client runs in the background and have a systemtrayicon (the icon with the letter "C")



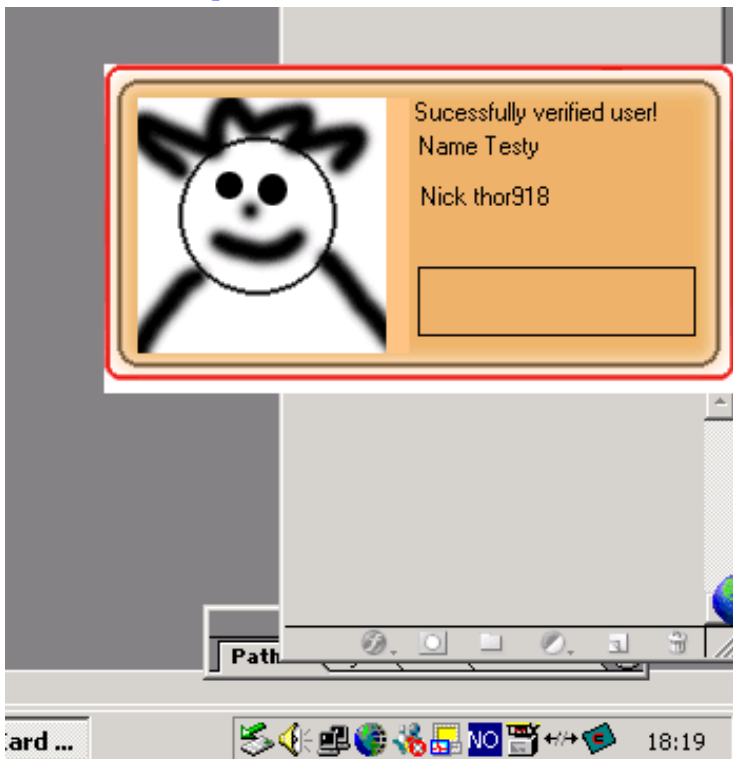
A valid card is detected. [Goto top](#)



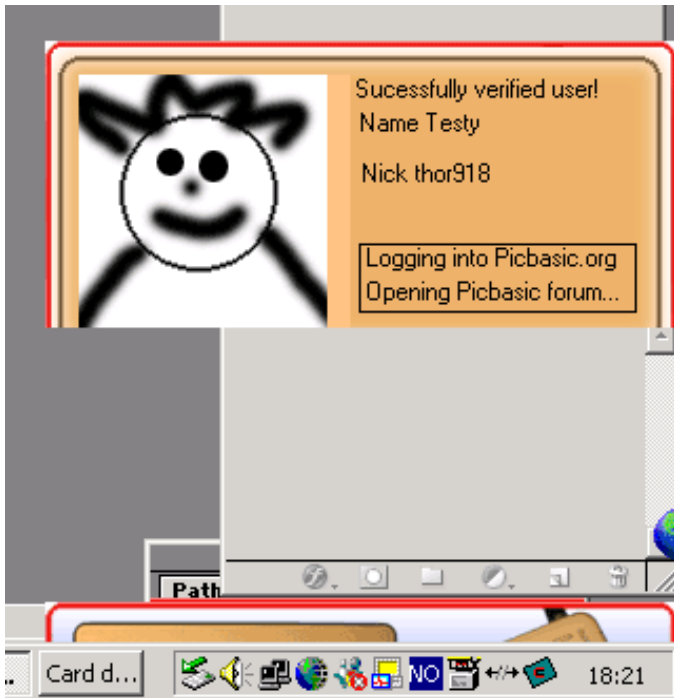
Pin entering [Goto top](#)



Pin ok (1) [Goto top](#)



Pin ok (2) [Goto top](#)




Configure the current card [Goto top](#)

Cardbase V1.0 - Client

Worklogg

24.05.2004 18:17:52 : Program is ready to read card
 24.05.2004 18:19:52 : Pin ok
 24.05.2004 18:19:52 : Card identified, Cardowner Testy (thor918)

User information (Readonly)

 Name
 Adress
 Email

Config

Picbasic.org (some settings)

Login/logout forumuser on cardinsert
 Open forum in internetbrowser

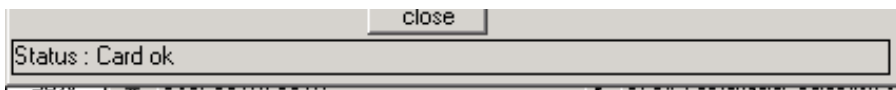
Alert Sound: Sound

Picbasic.org (map forum account to this card)

NB: This works only if you use internet explorer (webbrowser).
 You must be connected to internet.

Username :
 Password :

Status : Card ok



Files: [Goto top](#)

[cardbase.zip](#)

[cardbase.pdf](#)

Information about this project: [Goto top](#)

It uses memorycards to identify a user. I use SLE4442 (4 number password, 2byte) and SLE4428 (6 number password, 3byte).

I have made some security code, but you can't count this project to be safe (see it as a fun project).

A cool feature is that the program can login a picbasic.org forum account when a card

is inserted, and logout a user when the card is removed :) Very nice if the computer

is used by many people (you need to make some changes to make it safe. Encrypt information that is in the database)

In the project there are some "Bit conversions" (by Vladimar) that can be very useful in any electronic project :D

(byte to bits or bits to byte conversions!)

Thanks : [Goto top](#)

A special thanks goes to those who have created many codes public for others to use.

I have used codes from others in my project.

Thanks goes to :

Playxcube (Msn like trayalert) [Planetsourcecode.com](#)

Federico Bridger (Systemtray) [Planetsourcecode.com](#)

Brett Johnson (A better random number) [Planetsourcecode.com](#)

Vladimar (Bit conversions) [Planetsourcecode.com](#)

If you are looking for a nice msn like alert that don't steal focus from other applications goto : (Free activex component)

Clint LaFever (Msn like trayalert) <http://vcreations.net/>

I will not take any responsibility for what this project may cause!

Made by Thor selnes. thor918@online.no