

# Iosoft Ltd.

## ChipWeb Wireless Development Kit

### Software Manual

## 1. Introduction

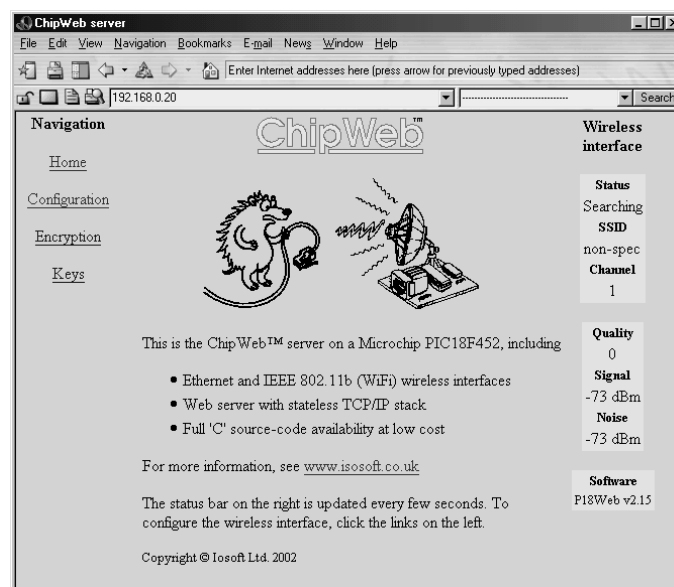
The Iosoft Ltd. *ChipWeb Wireless* kit supports the development of embedded 802.11b hardware and software, with particular reference to Microchip PIC18xxx microcontroller family, and the 'C' programming language. It is supplied in two parts:

- The ER2x (ER21 or ER22) development board
- The ChipWeb Wireless source-code package.

This manual describes the source-code package; it is assumed that you already have an ER2x development board operating in a wireless environment, configured as described in the hardware manual.

The basis for the source-code package is the Iosoft ChipWeb TCP/IP software for PICmicro® microcontrollers as described in 'TCP/IP Lean: Web Servers for Embedded Systems' by Jeremy Bentham (2<sup>nd</sup> edition ISBN 1-57820-108-X). You will also need a copy of the free Intersil 'PRISM Driver Programmer's Manual' AN9900 (also known as RM025), only available under Non-Disclosure Agreement directly from Intersil ([www.intersil.com](http://www.intersil.com)).

For sales and support information on ChipWeb products, refer to the Iosoft Ltd. Web site, [www.iosoft.co.uk](http://www.iosoft.co.uk)



## 2. Software development

### Development environment

To use the source-code package, you will need a compiler for the Microchip PIC18xxx family of microcontrollers. The Iosoft software is compatible with both the CCS ([www.ccsinfo.com](http://www.ccsinfo.com)) and Hi-Tech ([www.htsoft.com](http://www.htsoft.com)) compilers - see the README.TXT file and Iosoft support pages [www.iosoft.co.uk/support.php](http://www.iosoft.co.uk/support.php) for details.

### Installation

The package is provided in a single zip file, which also indicates the version number, e.g. P18WEB\_123.ZIP for version 1.23. The new files are only compatible with PIC18xxx-series microcontrollers, so it is recommended that a separate directory be created to house them, e.g. \ChipWeb\P18Web, and the source files unzipped into this. The unzip utility should preserve the original directory structure, so that a sub-directory ROMDOCS is automatically created as well. A README.TXT file has been included with release notes - please read this before using the files.

If installing the software from CD, remove the read-only attributes of the files by selecting them all, right-clicking to get their properties, then deselecting the read-only attribute.

### Software structure

The structure of the software follows closely the existing ChipWeb model, as described in 'TCP/IP Lean' 2<sup>nd</sup> edition, so this document will concentrate on the changes made to that code to support a wireless interface. These are

- File names and data types
- The wireless device driver
- Network device selector
- Non-volatile configuration
- Web interface

The following items are new additions:

- Power saving
- Compile-time options
- MPLAB configuration
- Host scan

## 3. File names and data types

### File names

It is impossible for the wireless code to run on a PIC16xxx processor, due to the additional memory requirements. For this reason, the new PIC18xxx-only versions of the ChipWeb files have dropped the 'P16' prefix, for example P16WEB.C has now become P18WEB.C.

### New files

The following new files have been created:

P18_DEFS.C	Function prototypes & definitions
P18_NET.C	Network interface
P18_WLAN.C	Wireless driver
WLAN.H	Wireless definitions

All the functions prototypes are now collected in P18\_DEFS.C, rather than being scattered throughout the files.

The new software supports multiple network interfaces, with run-time switching between them, so P18\_NET.C provides this functionality.

The wireless code is concentrated in P18\_WLAN.C, which is structurally similar to the existing Ethernet driver, P18\_ETH.C.

### Changed files

Most of the files have has minor changes, due to the data type change described below; the most significant changes are to P18\_HTTP.C, where major improvements have been made to the dynamic variable substitution code; these are discussed in detail later.

### Data types

Early versions of the CCS compiler didn't support 32-bit long integers, so a LWORD structure was defined to allow them to be handled in 16-bit chunks.

```
typedef union
{
    BYTE b[4];
    WORD w[2];
    unsigned INT32 l;
} LWORD_;
```

This is no longer necessary now that the compiler provides full 32-bit support, so a new data type has been defined,

```
#define DWORD unsigned int32
```

The type DWORD is a compiler-independent 32-bit unsigned integer, and allows the use of more consistent handling of function arguments, for example the original software used the following definitions:

```
void put_word(WORD w);  
void put_lword(LWORD *lwp);
```

The use of a longword pointer is inconsistent with other put\_xxx functions, so the function has been changed to

```
void put_dword(DWORD dw);
```

Unfortunately, the CCS type checking seemingly can't differentiate between the pointer and the longword, so no error messages are generated if the wrong type is used. For this reason, the new definition DWORD has been created, rather than just re-defining LWORD - at least an error message is generated every time the old definition is used.

## 4. Wireless device driver

### Intersil PRISM

The driver currently works with only one wireless chipset, the Intersil PRISM. The earliest version, PRISM 1, is now obsolete so the development has concentrated on the PRISM 2 variant. Later versions (PRISM 2.5 and 3) are starting to appear on the market, and the software should (according to the Intersil documentation) be compatible with these; refer to the software release notes for details.

Due to the restrictions of the Intersil non-disclosure agreement (NDA), no information can be provided on the internal architecture and operation of the PRISM chipset; you will have to sign the Intersil NDA and get hold of this information from them, which comes in the form of an excellent free 250-page document, the 'PRISM Driver Programmer's Manual', part number RM025.

### PCMCIA card interface

The wireless interface is provided in the form of a PCMCIA (PC) card, for which the ER2x board provides an appropriate interface to the PICmicro. Once initialised, the PCMCIA interface is transparent, so the I/O cycles to the PRISM closely resemble those to the Ethernet controller. There is also a memory interface on the card (called *attribute* memory), which gives information about the chipset in standardised (*tuple*) format. A 10-bit address and 8-bit data bus is connected to the PICmicro, together with 4 strobe lines; two to read/write the attribute memory, and two to read/write the I/O devices.

The current software does not use the tuple information, but does show how it can be displayed; after setting the data direction and an even-value address, the Output Enable strobe is asserted, and the data appears after a short delay.

```
#define DATA_TO_NIC    set_tris_d(ALL_OUT)
#define DATA_FROM_NIC set_tris_d(ALL_IN)
DEFBIT_0(PORTA, WC_OE_)
. . .
for (n=0; n<16; n++) // Dump first 16 CIS bytes for debug
{
    b = wcfg_rd(n+n);
    printf("%02X ", b);
}
. . .
/* Read a byte from PC card configuration */
BYTE wcfg_rd(BYTE reg)
{
    BYTE b;

    DATA_FROM_NIC;
    NIC_ADDR = reg;
    WC_OE_ = 0;
    DELAY_ONE_CYCLE;
    DELAY_ONE_CYCLE;
    b = NIC_DATA;
    WC_OE_ = 1;
    return(b);
}
```

To use this option on the ER22 board, link LK1 must be made so as to connect PICmicro pin RA0 to PCMCIA pin /OE.

Before making any I/O cycles to the PRISM chipset, it is necessary to enable it via a write cycle to the PCMCIA *configuration option register*, which is usually at address 3E0 hex.

```
WC_A8 = 1;          // Set hi address bits
WC_A9 = 1;
wcfg_wr(0xe0, 1); // Write Config Option Reg at 3E0h
WC_A8 = 0;          // (to enable I/O mode)
WC_A9 = 0;
```

The ER22 has address bits 8 and 9 linked to bit 7, so an address value of 0E0h will automatically access location 3E0h on the PCMCIA card.

Once the PCMCIA interface is initialised, an input cycle from the PRISM requires only that the data direction and address is set, and the 'I/O read' line asserted; the data appears on an 8-bit data bus after a short delay.

```
DEFBIT_2(PORTA, WC_IOR_)
. . .
/* Input a byte from a WLAN Controller register */
BYTE wc_in(BYTE reg)
{
    BYTE b;

    DATA_FROM_NIC;
    NIC_ADDR = reg;
    WC_IOR_ = 0;
    DELAY_ONE_CYCLE;
    DELAY_ONE_CYCLE;
    b = NIC_DATA;
    WC_IOR_ = 1;
    DELAY_ONE_CYCLE;
    DATA_TO_NIC;          // Drive data bus high
    DELAY_ONE_CYCLE;
    NIC_DATA = 0xff;
    DATA_FROM_NIC;
    return(b);
}
```

As a precautionary measure, the data bus is driven high after the cycle, rather than being left to float - some CMOS devices can oscillate when their inputs float around half their supply voltage.

The ER22 saves PICmicro I/O pins by using an address latch, so the address is output on the data bus, latched, then the data is output.

```
DEFBIT_4(PORTA, ADDR_LATCH)

/* Input a byte from a WLAN Controller register */
BYTE wc_in(BYTE reg)
{
    BYTE b;
```

```

NIC_DATA = reg;
DATA_TO_NIC;
DELAY_ONE_CYCLE;
ADDR_LATCH = 1;
DELAY_ONE_CYCLE;
ADDR_LATCH = 0;
DELAY_ONE_CYCLE;
NIC_DATA = 0;
DATA_FROM_NIC;
WC_IOR_ = 0;
DELAY_ONE_CYCLE;
DELAY_ONE_CYCLE;
DELAY_ONE_CYCLE;
DELAY_ONE_CYCLE;
b = NIC_DATA;
WC_IOR_ = 1;
DELAY_ONE_CYCLE;
DATA_TO_NIC;           // Drive data bus high
NIC_DATA = 0xff;
DATA_FROM_NIC;
return(b);
}

```

All cycles to the PRISM must be in 16-bit words, so two byte-wide cycles are aggregated:

```

/* Input a word from a WLAN Controller register */
WORD wc_inw(BYTE reg)
{
    BYTE hi, lo;

    lo = wc_in(reg);
    hi = wc_in(reg+1);
    return(((WORD)hi<<8) | (WORD)lo);
}

```

For more information on PCMCIA, see 'PCMCIA System Architecture' by Don Anderson, ISBN 0-201-40991-7.

## 5. Network device selector

Previous versions of the ChipWeb software could only drive one network device at a time; switching between network interfaces involved re-compilation. The new version has abstracted all the device-independent network code into a new file P18\_NET.C, and has the facility to dynamically switch between devices. This allows the same Web pages to appear simultaneously on both Ethernet and wireless networks.

The switch-over is achieved by a function `select_device()`

```
// Net device definitions
#define DEVICE_ETH 0 // Ethernet device
#define DEVICE_WLAN 1 // Wireless LAN device
#define NUM_DEVICES 2 // Total number of network devices
BYTE my_mac[MACLEN]; // My MAC addr (Ether or WLAN)
. . .
/* Select the Tx and Rx network device */
void select_device(BYTE device)
{
    if (device < NUM_DEVICES)
    {
        rx_device = device;
        tx_device = device;
        if (device == DEVICE_WLAN)
            memcpy(my_mac, wlan_mac, MACLEN);
        else
            memcpy(my_mac, myeth, MACLEN);
    }
}
```

It is assumed that switch-over occurs before the device is polled for incoming traffic, so there isn't any partially-analysed data to be saved. It is important that any high-level function requiring a local MAC address refers to the new 'my\_mac' variable, rather than the old Ethernet-specific 'myeth'.

On each pass of the main polling loop, the 'next' device is selected, using the following function:

```
/* Select the next Rx device */
void next_device(void)
{
    BYTE device;

    device = DEVICE_ETH;
#if INCLUDE_ETH && INCLUDE_WLAN
    device = rx_device + 1;
    if (device >= NUM_DEVICES)
        device = 0;
#else
#if INCLUDE_WLAN
    device = DEVICE_WLAN;
#endif
#endif
    select_device(device);
}
```



## 6. Non-volatile configuration

In contrast to the Ethernet controller, the wireless controller requires a significant amount of configuration information that has to be stored in non-volatile memory. A structure is used to hold this

```
#define SSID_LEN      32    // Max length of SSID
#define WEP128_KEYLEN 13    // Length of 128-bit WEP key
. . .
typedef struct {
    BYTE type;
    BYTE chan;           // Channel number (1-13)
    char ssid[SSID_LEN+2]; // Desired network name;
null=any
    BYTE weptype;       // WEP enable
    BYTE authtype;     // Authentication enable
    BYTE defkey;       // Default key number (0-3)
    BYTE keylen1;      // Length of key
    BYTE key1[WEP128_KEYLEN]; // Only 1 key in this
release
} WLAN_CFG;
WLAN_CFG wlancfg;
```

The structure is saved to the non-volatile EEPROM memory on a PIC18F452 using the existing `write_eeprom()` function:

```
#define WLANCFG_ADDR 0x10    // Address of WLAN config
. . .
/* Save the WLAN configuration data in EEPROM */
BOOL save_wlancfg(void)
{
    BYTE *bp, n;

    bp = (BYTE *)&wlancfg;
    for (n=0; n<sizeof(WLAN_CFG); n++)
        write_eeprom(WLANCFG_ADDR+n, *bp++);
    return(1);
}
```

The corresponding `load_wlancfg()` function performs a simple sanity check on the data, and loads default values if an error is detected.

## 7. Web interface

### Dynamic variables

The Web interface is called upon to display a wide variety of status and configuration information, and the existing EGI variable-substitution technique proved too cumbersome, so a new system based on long variable names has been developed.

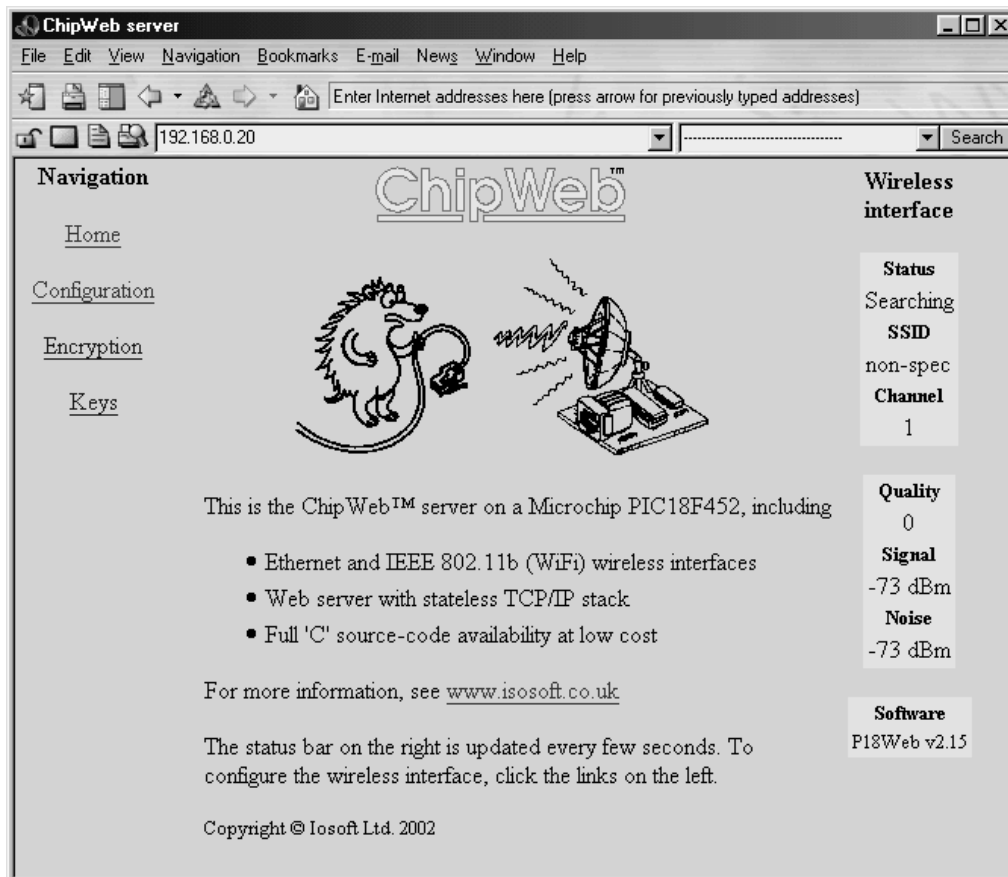


Fig. 1: Main Web frameset

Figure 1 shows the main frameset, which is similar to that used on previous ChipWeb projects; the left-hand frame is used for navigation, and the right-hand frame to display status information that is updated every few seconds.

The following HTML code fragment from the status frame shows the new long-variable-name scheme in action

```
<table bgcolor=#e0e0ff vspace=0>
<tr><th align=center
colspan=2><small>Quality</small></th></tr>
<tr><td align=center><b>$quality</b></td></tr>
<tr><th align=center
colspan=1><small>Signal</small></th></tr>
<tr><td align=center><b>$signal</b> dBm</td></tr>
<tr><th align=center
colspan=1><small>Noise</small></th></tr>
<tr><td align=center><b>$noise</b> dBm</td></tr></table>
```

The numeric quality, signal & noise values are represented by the dynamic variables `$quality`, `$signal` and `$noise` (bold in the text above). When the pages are fetched from EEPROM, the correct numeric values are substituted before the page is sent out of the network interface, so `$signal` becomes, say, -73.

The substitution is not limited to numeric values; the variable `$version` becomes `P18Web v2.15`, so that the current software version number is indicated on the page.

The software to perform the substitution is in `P18_HTTP.C`, and is based on a lookup table, which contains the variable names (minus the dollar character), and the corresponding index values:

```
BYTE const egivars[] =
    "version configup xchan xssid ess ibss wstatus ssid chan "
    "quality signal noise defkey authen keylen";
#define EGIVAR_VERSION 1 // Index number of each variable
. . .
#define EGIVAR_QUALITY 10
#define EGIVAR_SIGNAL 11
#define EGIVAR_NOISE 12
. . .
```

In the main software loop that outputs the HTML pages, there is code that detects a variable, translates that variable to an index number, and then takes appropriate action:

```
if ((idx = match_egivar()) > 0)
{
    switch (idx)
    {
        case EGIVAR_VERSION: // Software version?
            putstr(SIGNON);
            break;
        . . .
        case EGIVAR_QUALITY: // Quality value
            PRINTF2("%u", (BYTE)wlan_qsn[0]);
            break;
        case EGIVAR_SIGNAL: // Signal value
            PRINTF2("-%u", (BYTE)(-wlan_qsn[1]));
            break;
        case EGIVAR_NOISE: // Noise value
            PRINTF2("-%u", (BYTE)(-wlan_qsn[2]));
            break;
        . . .
    }
}
```

The resulting run-time substitution is very versatile; for example, it is necessary to display a message when the user attempts to update the non-volatile configuration, in case there was an error:

```
case EGIVAR_CONFIGUP: // Config update OK?
    if (form_err == FORMERR_CANCEL)
        putstr("cancelled: not updated");
    else if (form_err == FORMERR_CHAN)
        putstr("error: invalid channel");
    else if (form_err == FORMERR_SSID)
```

```

        putstr("error: invalid SSID");
    . . .
else
    putstr("updated OK");
form_err = 0;
break;

```

The variable `$configup` can be embedded in a simple HTML page to report the status after an update.

```

<HTML><HEAD><TITLE>Wireless configuration update</TITLE></HEAD>
<BODY bgcolor=#d0d0ff><FONT face=helvetica>
<H4>Wireless configuration $configup</H4>
<FORM action=wlan1.cgi>
    <INPUT TYPE="submit" NAME="ok" VALUE="OK">
</FORM></BODY></HTML>

```

This produces the appropriate acknowledgement depending on whether the update was successful or not.

### Form variables

The increasing complexity of the Web pages also results in more complex HTML forms responses that have to be parsed, such as shown in figure 2.

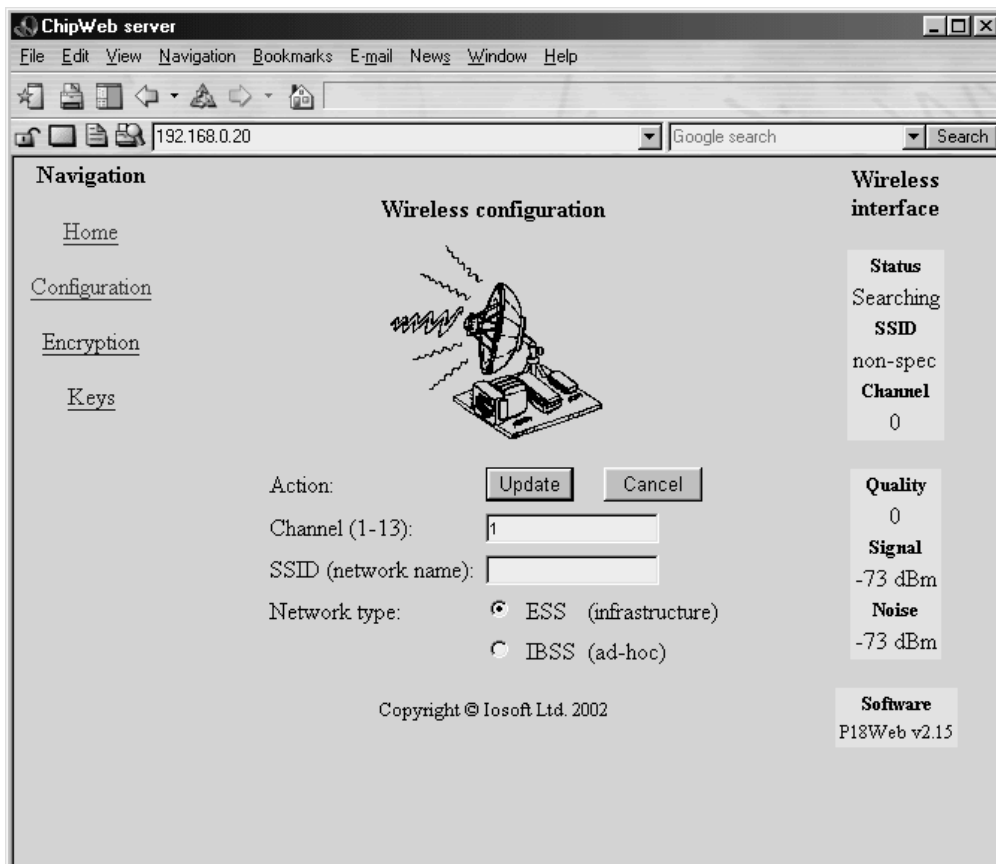


Figure 2: Wireless configuration form

If the user selects ESS network channel 1 with an SSID of 'Wireless', the browser sees the following response:

```
GET wlan1a.egi?submit=Update&chan=1&ssid=Wireless&type=ess
```

It is necessary to walk through the URL-encoded list of form variables and their values, in order to establish what the user has entered. A new helper function has been provided to simplify this process, and it too relies on a table of variable names and index values:

```
BYTE const formvars[] =
    "cancel chan ssid type defkey authen keynum keystr keyhex";
#define FORMVAR_CANCEL 1 // Index number of each variable
#define FORMVAR_CHAN 2
#define FORMVAR_SSID 3
#define FORMVAR_TYPE 4
. . .
```

The function `check_formargs()` processes the browser response, and takes appropriate action:

```
if (b=='=' && (idx=match_formvar())>0)
{
    switch (idx)
    {
        case FORMVAR_CANCEL: // Cancel button
            form_err = FORMERR_CANCEL;
            break;
        case FORMVAR_CHAN: // Channel number 1-13
            if (!get_num(&w) || w<MIN_WLAN_CHAN || w>MAX_WLAN_CHAN)
                form_err = FORMERR_CHAN;
            else
            {
                wlancfg.chan = (BYTE)w;
                updat++;
            }
            break;
        case FORMVAR_SSID: // SSID string
            get_formval_str(wlancfg.ssid, SSID_LEN);
            updat++;
            break;
        . . .
    }
}
```

The order in which the variables are processed matches the order they appear on the form. This is useful as it is necessary to perform an up-front check that the user hasn't pressed the 'cancel' button; if so, an error flag is set and the remaining form variables aren't processed.

## Web pages

The pages and graphics are stored in the sub-directory ROMDOCS; HTML pages should have a .HTM extension, or .EGI if they include dynamic variables, as described in chapter 11 of 'TCP/IP Lean'. In this implementation, any one page or graphic is limited to approximately 1440 bytes in size.

To create a ROM image of the files, the WEBROM utility from the 'TCP/IP Lean' CD-ROM is required. It takes an arbitrary number of files from a single directory, adds the HTTP headers, and stores them as a single binary image, e.g.

```
CD \CHIPWEB\P18WEB  
\TCPLEAN\WEBROM webpage.rom romdocs
```

This creates the file WEBPAGE.ROM using all the files in the sub-directory ROMDOCS. The size of each file is displayed, and the total image size, and it is worth checking that these do not exceed the limits for any one file, or the total EEPROM size (32 Kbytes).

To load the files into the serial EEPROM device on the ER2x a suitable device programmer may be used, or the image may be uploaded to the board using XMODEM over a serial link, as described in the ER2x hardware manual.

## 8. Power saving

The current consumption of the ER2x depends on network activity, but is normally around 250 mA, the bulk of which (200 mA) is taken by the PCMCIA card. This can be problematic in some applications, so the Prism chipset is equipped with a *power management* option, which can halve its power consumption when in infrastructure mode.

The Intersil documentation offers relatively little information on this power-saving mode, though there is some additional explanation on the PRISM knowledge base FAQ at [www.intersil.com/support/designResources.asp](http://www.intersil.com/support/designResources.asp)

As a first step to power reduction, an option has been added to the PRISM configuration data:

```
typedef struct {
    BYTE type;                // Network type: IBSS/ESS
    BYTE chan;                // Channel number (1-13)
    char ssid[SSID_LEN+2];   // Desired network name;
    null=any
    BYTE weptype;            // WEP enable
    BYTE authtype;          // Authentication enable
    BYTE defkey;             // Default key number (0-3)
    BYTE keylen1;           // Length of key
    BYTE key1[WEPL28_KEYLEN]; // 1 key in this release
    BYTE pm;                 // Power management
} WLAN_CFG;
WLAN_CFG wlancfg;
```

Any non-zero value of the 'pm' option will enable power management:

```
if (wlancfg.pm)                // Enable power mgmt?
{
    wc_writew(0xfc09, 0, 1);    // (only works on ESS)
    put_ser("WLAN power management enabled\r\n");
}
```

To allow this option to be enabled, an extra prompt has been added to the serial link configuration:

```
Power management (Y/N)?
```

If the user responds 'Y' or 'y', then it is enabled. There is a noticeable slowing of network activity, which is most noticeable in the lengthening of the 'ping' response time, but otherwise all network operation should continue as before.

## 9. Compile-time options

The pre-compiled image has Web server and DHCP client capabilities, but there are other options that can be enabled by altering the configuration block at the top of P18WEB.C and re-compiling:

```
/* TCP protocols: enabled if non-zero */
#define INCLUDE_HTTP 1      // Enable HTTP Web server
#define INCLUDE_SMTP 0     // Enable SMTP email client
#define INCLUDE_POP3 0     // Enable POP3 email client

/* UDP protocols: enabled if non-zero */
#define INCLUDE_DHCP 1     // Enable DHCP auto-config
#define INCLUDE_TIME 0    // Time client: polls server routinely

/* Low-level drivers: enabled if non-zero */
#define INCLUDE_ETH 1     // Ethernet driver
#define INCLUDE_WLAN 1   // Wireless LAN card driver
#define INCLUDE_LCD 0    // Set non-zero to include LCD driver
#define INCLUDE_CFG 1   // Set non-zero to include IP config
#define ER21 1         // Set non-zero if ER21 (0 if PICDEM)
#define ADDRATCHED 1   // Set non-zero for ER22

/* Other utilities */
#define INCLUDE_WLAN_SCAN 1 // Set non-zero to scan for WLAN APs
```

The client options are discussed in detail in 'TCP/IP Lean' 2<sup>nd</sup> edition.

### SMTP client

If this option is enabled, the user pushbutton is polled and de-bounced; when pressed a dummy email message is sent to the mail server defined as MAILSERVER\_ADDR at the top of p18\_tcp.c - by default, this is 10.1.1.1.

### POP3 client

If any key is pressed on the serial console, the mail server is polled using the POP3 protocol, with the username and password defined in p18\_mail.c, and the sender's address and subject line are printed out.

### DHCP client

This is normally included by default, but is only enabled if a zero-value IP address (0.0.0.0) is set in the user serial configuration.

### Time client

The time server defined as TSERVER\_ADDR in p18web.c is polled every five seconds, and the current time is printed or displayed on an LCD in hh:mm:ss format. The RFC868 UDP time protocol is employed, whereby the server returns a 32-bit value containing the number of seconds since 1/1/1900.

### Ethernet and WLAN drivers

The Ethernet or WLAN driver can be conditionally compiled out if not required.



## LCD driver

The PICDEM.net board has an LCD display, so there is an option to include the drivers for this.

## Serial configuration

Usually the serial configuration option is included, to allow the software to be configured by the user over a serial link.

## ER21 support

The primary hardware platforms are the Microchip PICDEM.net board, and the Iosoft ER2x; they differ in their I/O allocation, so there is a conditional compilation setting to enable ER21 (and disable PICDEM.net) support.

## ER22 support

The ER22 is similar to the ER21, but has an additional address latch, so both the ER21 and ADDRATCHED options must be set.

## Host scan

If the INCLUDE\_WLAN\_SCAN option is set, then pressing the ER2x pushbutton will initiate a host scan, the results being output on the serial link. See section 11 for more information.

## Interface used by client software

If both the Ethernet and WLAN interfaces are enabled, the Web server will respond to incoming requests on either interface. However, the client software (DHCP, SMTP, POP3, time) must choose an interface that will be used to request the service; this is defined in p18\_defs.c.

```
// Net device definitions
#define DEVICE_ETH 0 // Ethernet device
#define DEVICE_WLAN 1 // Wireless LAN device
#define NUM_DEVICES 2 // Total number of network devices
#if (INCLUDE_ETH && INCLUDE_WLAN)
#define CLIENT_DEVICE DEVICE_WLAN // Used for TCP & UDP clients
#else
#if INCLUDE_ETH
#define CLIENT_DEVICE DEVICE_ETH
#else
#define CLIENT_DEVICE DEVICE_WLAN
#endif
#endif // [INCLUDE_ETH && INCLUDE_WLAN]
```

If only one interface is in use, CLIENT\_DEVICE is set to that interface. If both are in use, the WLAN device is chosen by default, as shown above.

## 10. Using MPLAB and ICD

Microchip's free MPLAB software is a convenient front-end for driving their range of programmers, emulators and in-circuit debuggers. MPLAB project files aren't supplied with each Iosoft release, as there are many user-defined options. This section shows how to create an MPLAB v6.30 project file for the most commonly-used programming & debugging device, the Microchip ICD 2 in-circuit debugger.

Before creating a project, MPLAB, ICD and compiler must be installed as described in their documentation.

### MPLAB project using Hi-Tech PICC18 compiler

The steps in MPLAB are:

```
Project | New
  Set project name:  p18webhd
  Project directory: c:\chipweb\p18web
  The project window p18webhd.mcp opens

Project | Select Language Toolsuite
  Change active toolsuite to Hi-Tech PICC-18

Project | Add files to project
  Select c:\chipweb\p18web\p18web.c

Project | Build options | Project
  Select linker tab
  Tick 'link for ICD'
  Tick 'use alternate settings'
  Enter the following link settings:
    -FAKELOCAL -O"${TARGETBASE}.hex" -NOERRATA

Project | Make (or F10 key) should report 'build succeeded'

Apply power to both ICD 2 and target board.
Connect using 6-way ICD cable.

Debugger | Select tool | MPLAB ICD 2
  Setup Wizard is launched
  COM port USB
  Target has own power supply
  Don't automatically connect to ICD 2
  Don't automatically download OS updates

Debugger | Connect

Debugger | Program
  Acknowledge warning that end address > memory size

Debugger | Run (or F9 key)
```

Programming the PICmicro to run without the ICD:

```
Project | Build options | Project
  Select linker tab
```

```
Un-tick 'link for ICD'  
  
Project | Build all (ctrl-F10) should report 'build succeeded'  
  
Debugger | Connect  
  
Debugger | Program  
Acknowledge warning that debug mode is disabled
```

When programming is complete, disconnect the 6-way ICD cable. The target software should start immediately.

Programming the PICmicro will generally erase the application-specific data in EEPROM, so this will need to be re-entered using the serial console.

## MPLAB project using CCS PIC18 compiler

A CCS plug-in must be installed for MPLAB versions prior to v6.20; for details see the CCS website [www.ccsinfo.com](http://www.ccsinfo.com)

```
Project | New  
Set project name: p18webcd  
Project directory: c:\chipweb\p18web  
The project window p18webcd.mcp opens  
  
Project | Add files to project  
Select c:\chipweb\p18web\p18web.c  
  
Project | Select Language Toolsuite  
Change active toolsuite to CCS C compiler  
  
Project | Build options | Project  
Select CCS C compiler tab  
Tick 'compile for use with ICD'  
  
Project | Build all (ctrl-F10) should report 'build succeeded'
```

Debug as for Hi-Tech compiler.

## 11. Host scan and information frames

### Introduction

The Intersil PRISM chipset offers a 'host scan' mechanism, which probes the WLAN network to obtain details of all available Access Points (APs). This scan is 'non-destructive', in that the association with the current access point is not broken.

If the host scan option is enabled (by setting INCLUDE\_WLAN\_SCAN non-zero) then pressing the ER2x pushbutton at any time will initiate a host scan request, the results being displayed on the serial console.

### Host scan request

The scan is triggered by the pushbutton on the ER2x. This is detected in the main while(1) loop, de-bounced, and the scan\_wlan() function is called:

```
if (button_down != button_in)
{
    button_in = button_down;
    if (button_down)
    {
        put_ser("Scanning for APs..\r\n");
        scan_wlan();
    }
}
```

The scan\_wlan() function issues a RID FCE5 request, with a Boolean list of channels, a data rate for the scan, and an SSID string.

```
#define SCAN_SSID "Wireless"

/* Start scan for access points */
void scan_wlan(void)
{
    BYTE data[38];

    data[0] = data[1] = 0xff; // All channels
    data[2] = 0x00; // Lowest rate
    data[3] = 0x01;
    strcpy(&data[6], SCAN_SSID); // SSID string, max 32 chars
    data[4] = strlen(&data[6]); // SSID string length word
    data[5] = 0;
    wc_write(0xfce5, 0, (WORD *)data, 38, WC_DATA);
}
```

The SSID may be a null string in which case the scan should detect Access Points with any SSID, providing the APs have the SSID broadcast (beacon frame) feature enabled. It is possible that the system administrator has disabled SSID broadcasts for security reasons, in which case the AP will not respond to a null SSID. In this case, it is necessary to use the actual SSID (e.g. 'Wireless') in the probe request.

## Information frames

On completion, the host scan generates an information frame with the results. The arrival of this frame is signalled by an 'info' event.

Event polling is already performed in the `get_wlan()` function to detect the arrival of receive frames, so the info event is trapped there and a `get_wlan_info()` function is called to process the frame, then the event is acknowledged which destroys the frame.

```
BOOL get_wlan(void)
{
    WORD len=0, event;

    event = wc_event(0);           // Check for any events
    if (event & WC_EVENT_RX)      // If receive event..
    {                               // ..get FID of Rx buffer
        . . .
    }
    else if (event & WC_EVENT_INFO) // If info event..
    {
        get_wlan_info();           // Decode the RID
        wc_event(WC_EVENT_INFO);   // ACK the event
    }
    else                           // If any other event..
    {
        wc_event(event);           //..just ACK it
    }
    net_rxin = len;
    return(len != 0);
}
```

To fetch the info frame, the FID is obtained from the InfoFid register, then the existing `wc_read()` function can be used to access the contents. The first word indicates the total length (in words), then there is an InfoType word that identifies the information frame, the most common values being:

F000	Handover address
F100	Communication tallies
F103	Host scan results
F200	Link status

See the PRISM programmer's manual for a complete description of these frames. Note that there is no guarantee that the first information frame after a host scan will be the response to that scan; the PRISM chipset generates other information frames at random times, so it is important to check the InfoType field is correct.

The `get_wlan_info()` function does a partial decode of the host scan & link status frames.

```

void get_wlan_info(void)
{
    WORD fid, len, type, oset=8, chan, sl;
    BYTE i, n, ssid[34];

    fid = wc_inw(WC_REG_INFO_FID);
    len = wc_readw(fid, 0);
    type = wc_readw(fid, 2);
    len <= 1;
    SERIAL_OUTPUT;
#ifdef HI_TECH_C
    printf("Info %04X ", type);
#else
    printf("Info %04lX ", type);
#endif
    if (type == 0xf103)
    {
        printf("host scan:");
        while (oset+60 < len)
        {
            printf("\r\n");
            chan = wc_readw(fid, oset);
            sl = wc_readw(fid, oset+4);
#ifdef HI_TECH_C
            printf("Chan %u signal %d", chan, sl);
#else
            printf("Chan %lu signal %ld", chan, sl);
#endif
            wc_read(fid, oset+16, (WORD *)ssid, 34, WC_DATA);
            n = ssid[0];
            if (n < 33)
            {
                printf(" SSID ");
                i = 2;
                n += 2;
                while (i < n)
                    serial_putch(ssid[i++]);
                serial_putch('\n');
            }
            oset += 64;
        }
    }
    else if (type == 0xf200)
    {
        printf("link status: ");
        n = (BYTE)wc_readw(fid, 4);
        if (n == 1) printf("connected");
        else if (n == 2) printf("disconnected");
        else if (n == 3) printf("AP change");
        else if (n == 4) printf("AP out of range");
        else if (n == 5) printf("AP in range");
        else if (n == 6) printf("association failed");
    }
    printf("\r\n");
}

```

## Results

When the ER2x initially connects to an Access Point, a 'connect' frame is reported over the serial link.

```
WLAN status Searching
Info F200 link status: connected
WLAN status Infra.
```

Pressing the pushbutton on the ER21 generates a display such as this, after a delay of about one second:

```
Info F103 host scan:
Chan 1 signal -43 SSID 'Wireless'
Chan 6 signal -45 SSID 'Wireless'
```

The signal strength is indicated (theoretically, at least) in dbm, hence the negative values.

It is worth experimenting with the host scan, to check how accurately it reports the network configuration. The host scan process seems to be relatively low priority within the PRISM chipset, so may be over-ridden by a higher priority action, such as a new association. In this case a null host scan may be returned, even though there are several Access Points within range.

JPB 15/7/03

--ends--